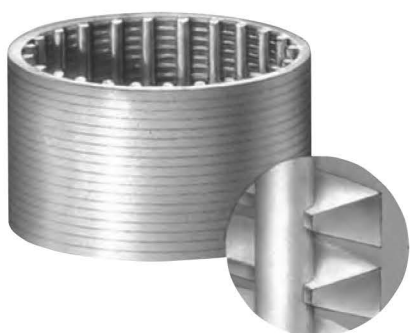


PVC Vee-Wire

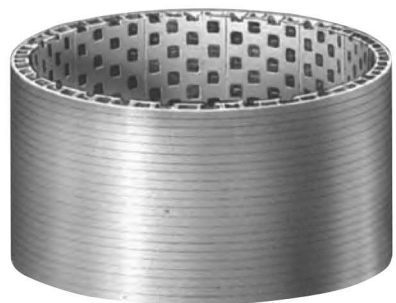
Commonly used in shallow wells, PVC Vee-Wire screens present higher open area screen available in PVC. PVC Vee-Wire screens resist corrosion from aggressive waters and are ideal for many environmental applications. PVC screens are furnished with F480 flush threads or plain ends for connecting to Johnson Screens PVC fittings.

Pipe Size (in.)	Nominal O.D. (in.)	Dia. I.D. (in. ¹)	Weight/ ft. (lbs.)	Tensile Strength (lbs) ²	Hang Weight (lbs.) ⁴	Open Area (sq in.) Per Foot of Screen Collapse Strength - PSI ³					
						Screen Slot Size (in.)					
						0.006	0.010	0.020	0.030	0.040	0.050
1 - 1/4 PS	1.7	1.2	0.7	780	195	3.1	4.9	9.2	12.8	16.0	18.9
						270	260	240	230	210	200
1- 1/2 PS	1.9	1.5	0.8	1200	310	3.4	5.5	10.2	14.3	17.9	21.1
						180	180	160	150	140	130
2P/3T	2.4	1.9	0.8	1300	330	4.3	7.0	12.9	18.1	22.6	26.6
						95	92	85	79	74	70
2 PS*	2.6	2.0	0.9	1300	330	4.7	7.5	14.0	19.6	24.5	28.8
						72	70	65	61	57	54
3 PS	3.5	2.9	1.5	1800	460	5.4	8.8	16.5	23.3	29.3	34.7
						170	160	150	150	140	130
4 Special	4.5	3.9	1.7	2100	530	7.0	11.3	21.2	29.9	37.7	44.6
						81	78	74	69	65	62
4 PS*	4.6	4.0	1.8	2100	530	7.1	11.6	21.7	30.6	38.5	45.6
						75	73	68	64	60	57
5 PS	5.7	4.9	2.5	3900	980	8.3	13.4	25.3	35.8	45.2	53.7
						73	72	68	65	62	59
6 PS	6.6	5.9	3.7	4600	1200	8.0	13.1	24.9	35.5	45.2	54.1
						73	72	68	65	62	59
8 PS	8.8	7.6	4.6	5500	1400	13.6	22.1	41.5	58.6	73.7	87.3
						60	59	55	52	49	46

1. Clear ID's are minimum inside diameters
2. Tensile values are based on support rod area, other values are based on flush-thread test values
3. Collapse strengths are calculated values - no safety factor included
4. Hang weights are the maximum combined weight of riser and screen to be hung from the top screen joint
5. All strength properties are based on 73° F
6. Alternate construction for environmental applications



Designs up to 6 in. are made with standard rod base.



The 8 in. design features a channel-rod base for enhanced strength.

*Alternate construction for environmental applications